

PRODUCTS INTRODUCTION

Cutting workpiece will produce high temperature vapor, the water vapor on the surface of the workpiece will isolate the cutting fluid from adhering, resulting in less than 20% of the cooling effect of the workpiece or tool, the only way to achieve the most efficient cooling effect is to pressurize the cutting fluid to more than 30 bar, so that the cutting fluid can directly contact the workpiece and tool.


Advantages of Use

- ◆ 1. Reduce tool wear during cutting and machining, saving tool costs.
- ◆ 2. Improvement of iron filings generated by cutting, which is conducive to the introduction of automation.
- ◆ 3. The high-pressure center water discharge function effectively improves the drilling depth and cutting speed of the machine. It greatly improves the stability of cutting size during machine tool machining and increases the qualified rate of workpiece at the same time. Increase the feeding speed and cutting speed, increase the eating force, tap more productivity in production.
- ◆ 4. Fine filtration of the cartridge optimizes the cutting water quality and avoids the blockage of the circulating pipeline.
- ◆ 5. Reduce the risk of tool breakage, significantly reduce the local high temperature during machining, and extend tool life.

USE

High pressure center outlet water system is used for machine tools, industrial cleaning equipment and other working conditions, can be applied to different temperature, flow, pressure range, filtration accuracy of 25μm, pressure of 20, 30, 50, 70bar.

Same workpiece high pressure center water system (high pressure) VS low pressure cooling (traditional)

	High pressure center outlet system	Conventional low pressure cooling
Outlet mode		
material	Stainless steel	Stainless steel
Tool life (average)	3000pcs needs a new drill bit	80pcs requires a new drill bit
Shutdown time for tool change	The tool is changed once every 4 days, and the tool is changed within 1 hour a week	Eight tool changes in 24 hours and nine hours of downtime a week
Chip breaking condition	Chip breaking condition is good	There is often rolling debris
Chip breaking condition		

FILTERING MODE



Vortex separator

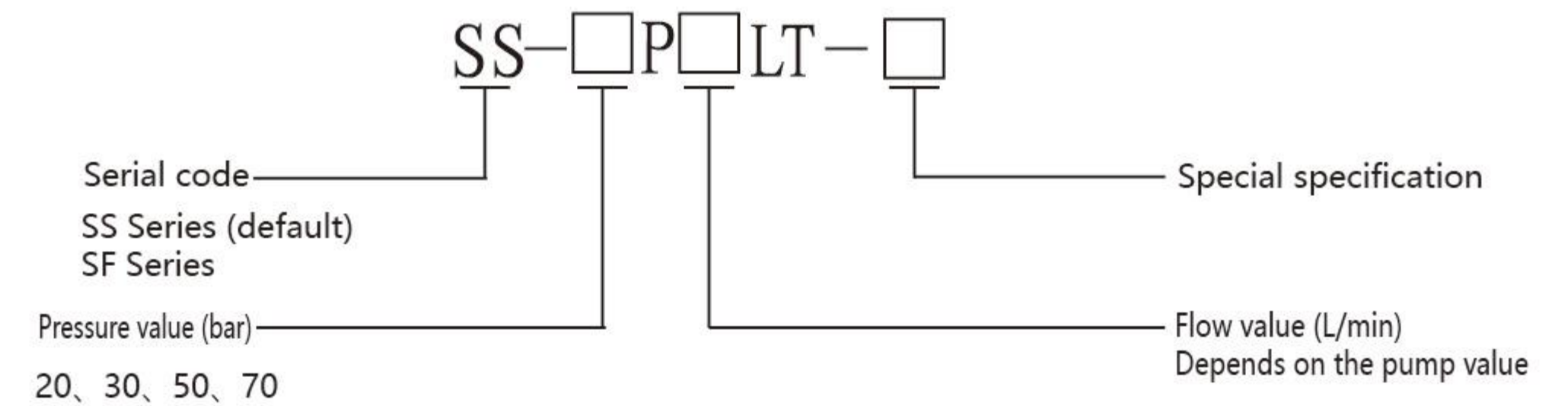
The turbine separator works mainly on the principle of centrifugal force. When the mixed liquid such as oily sewage enters the turbine separator, under the centrifugal force generated by the high-speed rotating turbine, the dense liquid is thrown to the outside of the separator, while the less dense liquid is gathered to the center. Through the reasonable setting of the outlet channel, the oil and water can be respectively drawn out, so as to achieve the purpose of separation.



Bag filtration

Bag filter is a common filter equipment, mainly used to remove solid particles in gases or liquids. It can be used as either a dust collector or a liquid filter. (The bag filter needs to be changed regularly after a period of time).

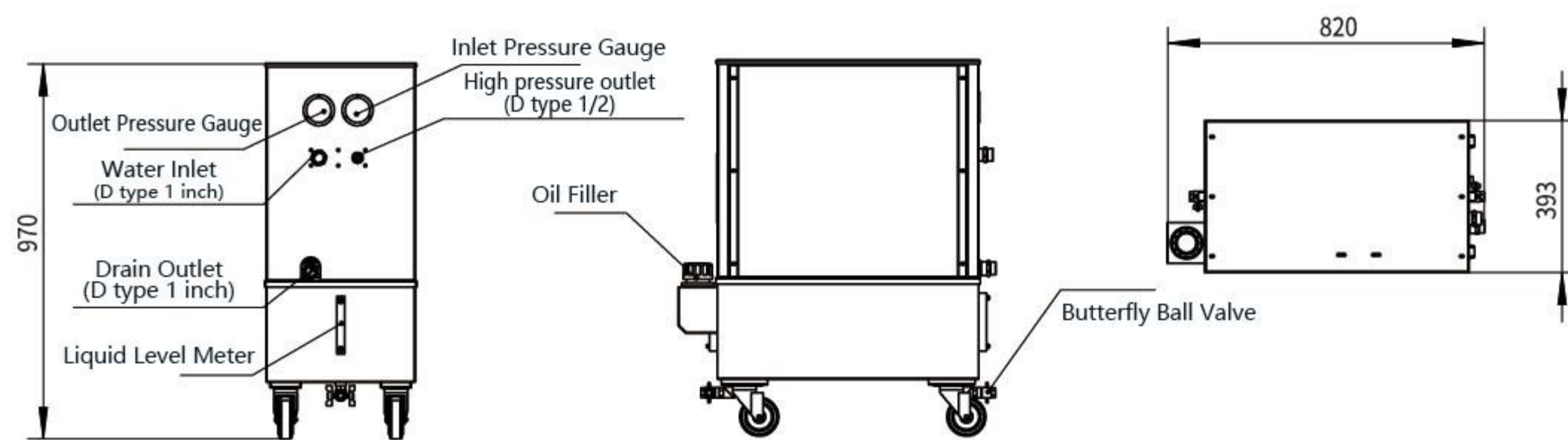
TYPE DESCRIPTION



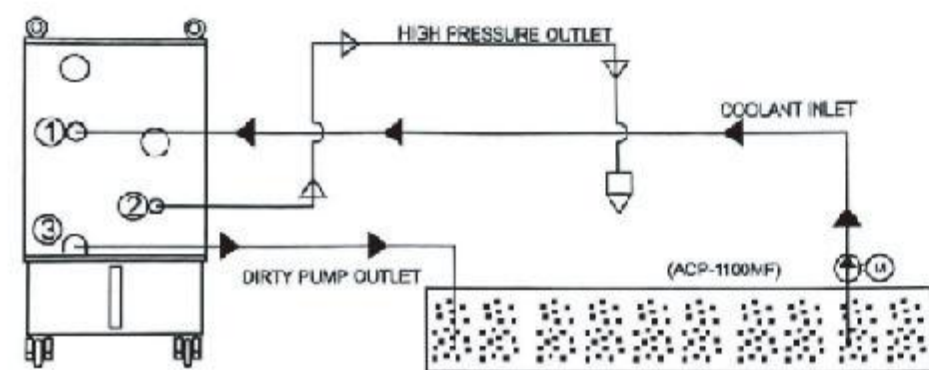
SELECTION METHOD

Product type	SF-MSHC-30P20LT	SF-MSHC-30P50LT	SS-20P50LT-BD	SS-30P50LT-BD	SS-50P30LT-BD	SS-70P30LT-BD
Outlet pressure (kg)	30	30	20	30	50	70
Discharge flow (L/min)	20	50	50	50	30	30
Rated power (kw)	1.5	2.25	2.2	4	7.5	7.5
Power frequency	220/380V 50Hz					
Filtration method (25μm)	Vortex separator	Vortex separator	Bag filtration	Bag filtration	Bag filtration	Bag filtration
Pump type	gear pump	gear pump	centrifugal pump	centrifugal pump	screw pump	screw pump
Pump brand	a-ryung	dgsnlp	Cnppump	Cnppump	rsppump	rsppump
Overall dimensions (mm)	820×385×950	820×385×950	700×550×1200	700×550×1200	794×547×1094	794×547×1094
Overall dimensions (mm)	60kg	60kg	50kg	60kg	72kg	72kg
Volume (L)	60	60	180	180	140	140

SF SERIES



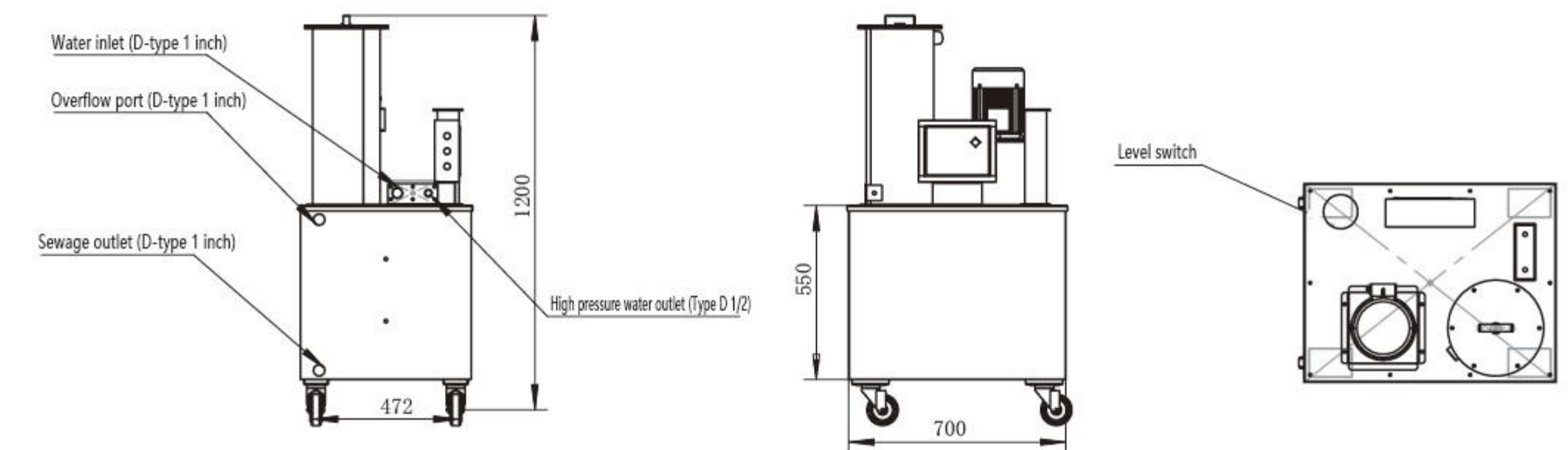
PRODUCT DESCRIPTION



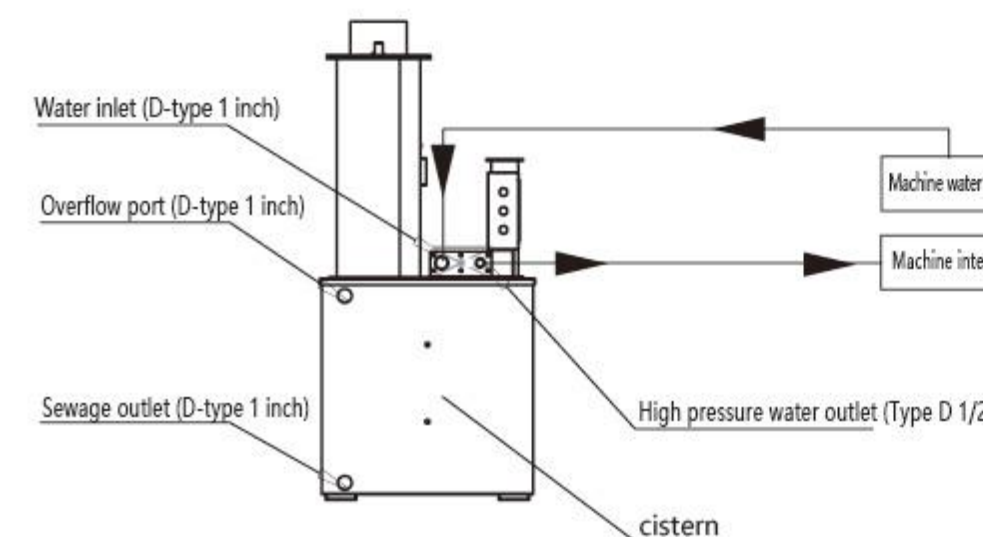
Mark description:

- ◆ 1. Water inlet interface (D-type 1 inch) : The line interface from the machine tank lifting pump to the water inlet of the high-pressure center outlet system.
- ◆ 2. High pressure water outlet interface (Type D 1/2) : The line interface from the high pressure center water outlet system to the machine tool entrance.
- ◆ 3. Sewage outlet interface (interface D type 1 inch) : The line interface of the filtered sewage from the sewage tank to the machine tank.

SS SERIES



PRODUCT DESCRIPTION



Mark specification:

- ◆ 1. Machine tool water tank lift pump - High pressure central outlet water tank intake - filter bucket (D type 1 inch)- central outlet water tank (complete filtration).
- ◆ 2. Central water tank - High pressure pump (Type D 1/2 outlet) - inside the machine.
- ◆ 3. The overflow port can be replaced with a 1-inch bamboo joint or D-type 1-inch interface according to different requirements.